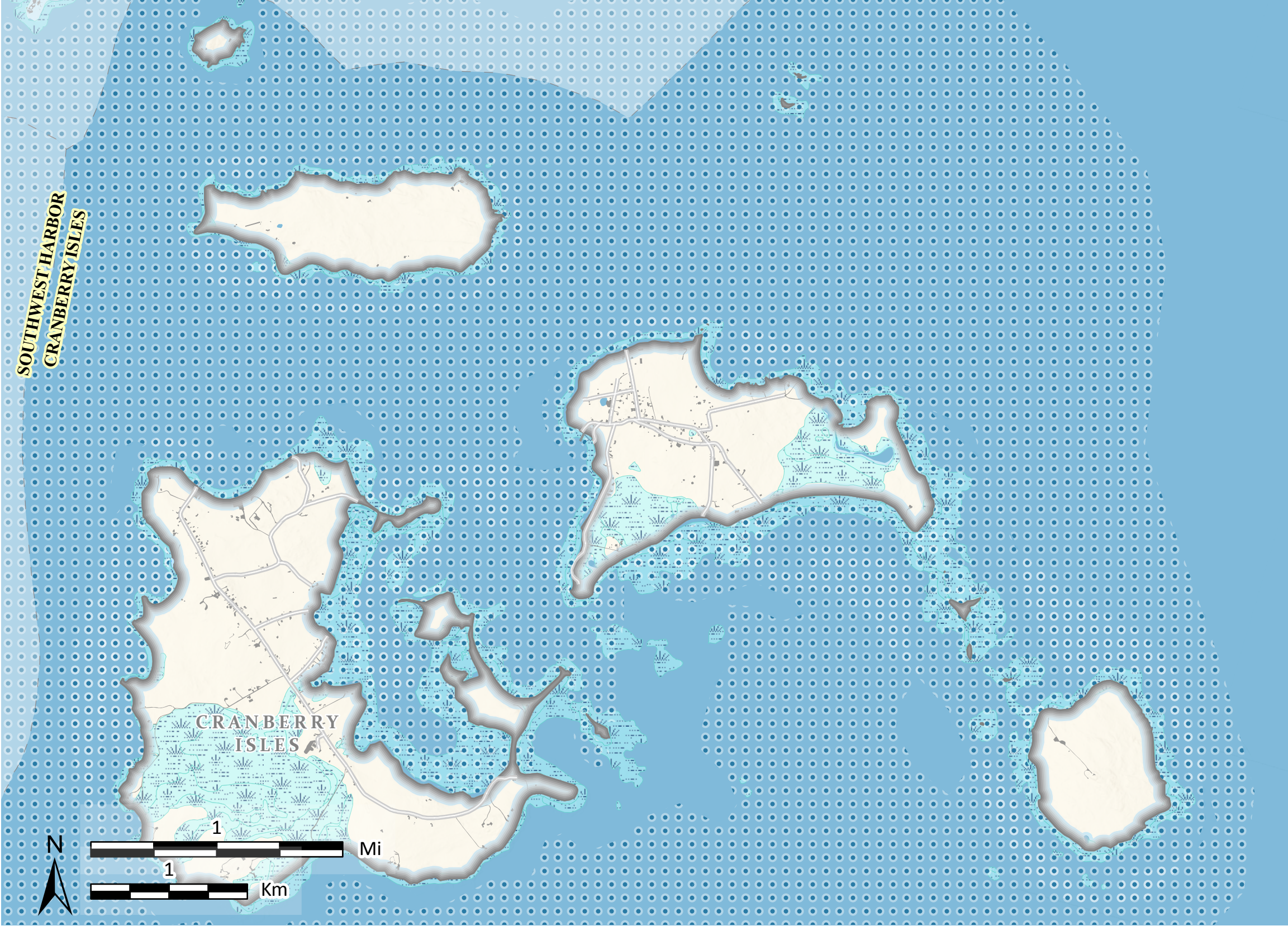


# Cranberry Isles

## Water Resources and Shoreland Habitats



This map is nonregulatory and is intended for planning purposes only



- Organized Towns**
- Shellfish Growing Areas** Distributions of molluscan shellfish species.
- Wetlands** National Wetlands Inventory (NWI) uses aerial photographs to approximate wetland locations. NWI data typically under represents the presence of wetlands on the landscape.
- Shoreland Areas** Areas are delineated by ME Dep. of Environmental Protection's Mandatory Shoreland Zoning Act, which includes areas within 250 feet of great ponds, rivers, and wetlands, and within 75 feet of streams. The regulations within each shoreland zone depends on the town, and towns may regulate greater areas than what is shown here. For more information, please visit: <https://www.maine.gov/dep/land/slz/>
- Developed** Impervious surfaces including buildings and roads.